

microstone

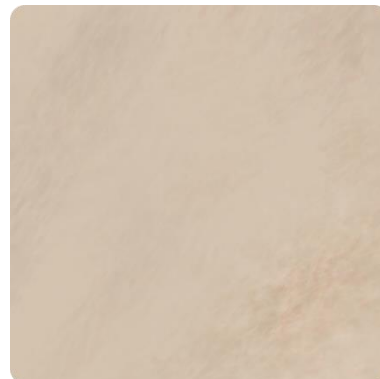
MICROSTONE® N & NW WITH PIGMENTS



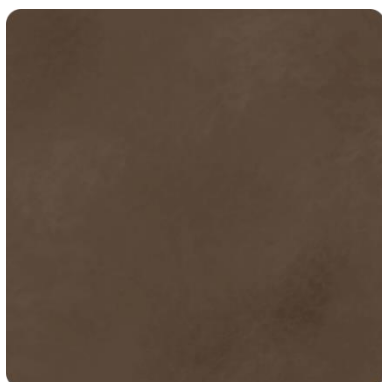
MS 109
(3% MS BASE 21 / 7% MS BASE 31)



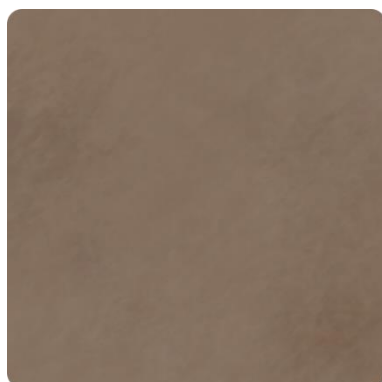
MS 110
(1.5% MS BASE 21 / 4% MS BASE 31)



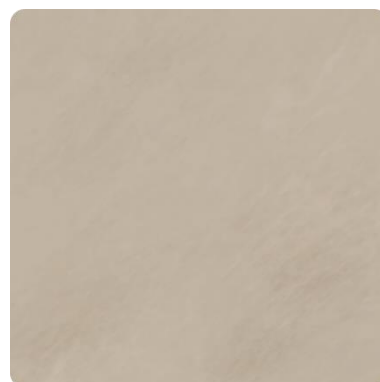
MS 111
(0.5% MS BASE 21 / 2% MS BASE 31)



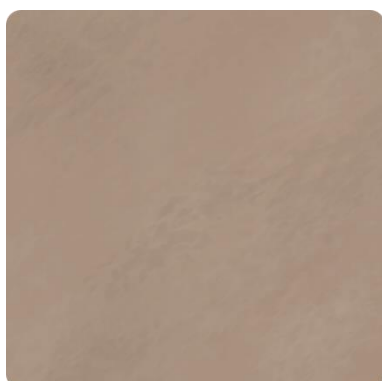
MS 112
(7.5% MS BASE 22)



MS 113
(5% MS BASE 22)



MS 114
(2% MS BASE 22)



MS 115
(7% MS BASE 23)



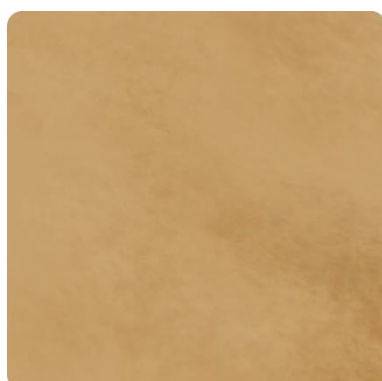
MS 116
(4.5% MS BASE 23)



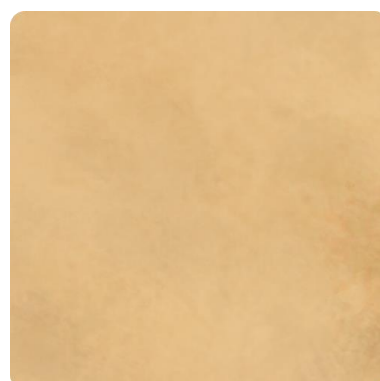
MS 117
(3% MS BASE 23)



MS 118
(7.5% MS BASE 24 / 2% MS BASE 31)



MS 119
(4% MS BASE 24 / 1% MS BASE 31)



MS 120
(0.5% MS BASE 31)

microstone

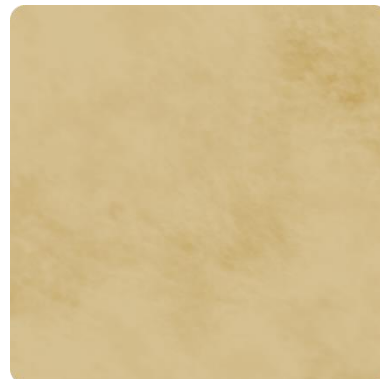
MICROSTONE® N & NW WITH PIGMENTS



MS 132
(7% MS BASE 30)



MS 135
(5% MS BASE 34)



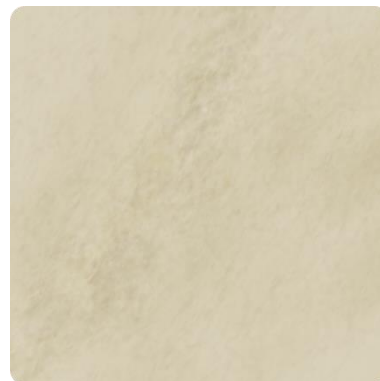
MS 130
(5% MS BASE 28)



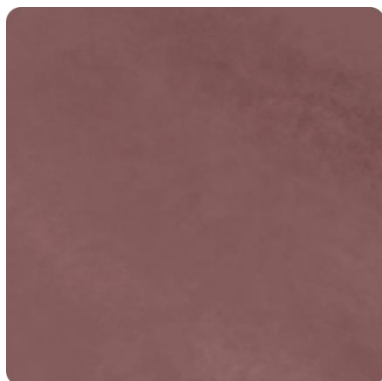
MS 124
(7% MS BASE 26)



MS 125
(4.5% MS BASE 26)



MS 126
(2% MS BASE 26)



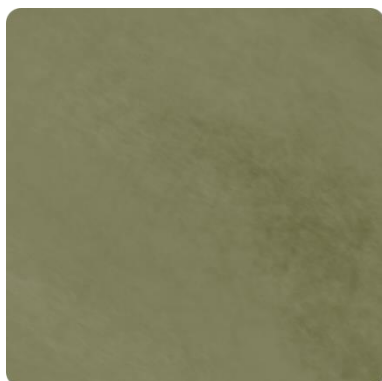
MS 121
(7% MS BASE 25)



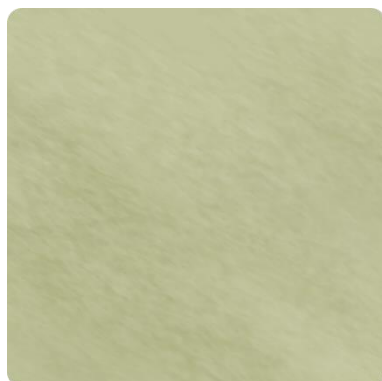
MS 122
(3% MS BASE 25)



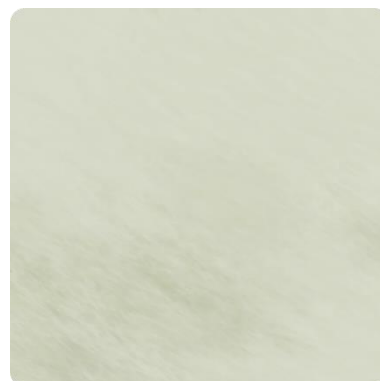
MS 123
(1.5% MS BASE 25)



MS 131
(6.5% MS BASE 29)



MS 134
(3% MS BASE 33)



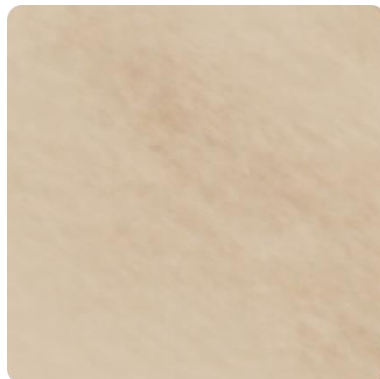
MS 133
(3% MS BASE 32)

microstone

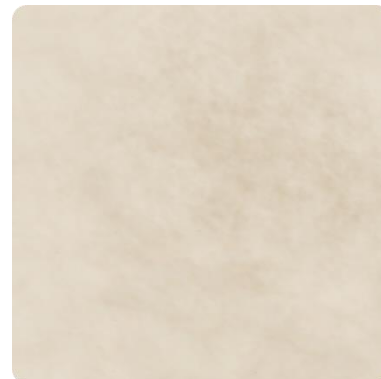
MICROSTONE® N & NW WITH PIGMENTS



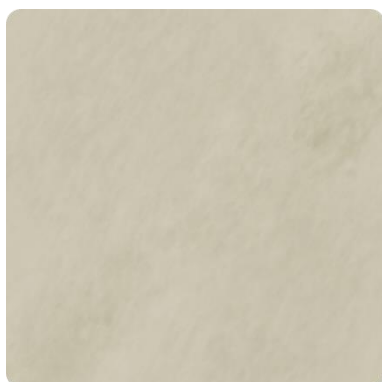
MS 127
(7% MS BASE 27)



MS 128
(4.5% MS BASE 27)



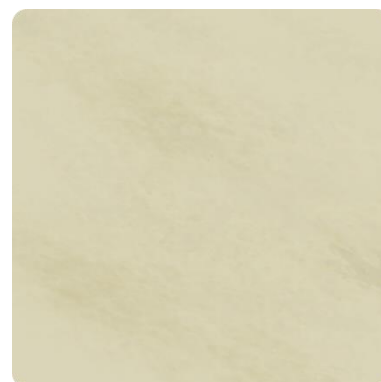
MS 129
(2% MS BASE 27)



MS 136
(6% MS BASE 35)



MS 052
(3% MS BASE 35)



MS 053
(1% MS BASE 35)

Colours may change depending on monitor and printer settings. They are presented as a reference only. For colour specifications it is strongly recommended that a physical sample is produced. MICROSTONE® pigments are made of natural minerals. Note that unavoidable slight differences and irregularities, typical of natural products, are to be expected.



Europe | Oceania | Latin America

info@supdeko.com | www.supdeko.com

Registered offices in Sweden, United Kingdom, Australia & Costa Rica