

# microstone

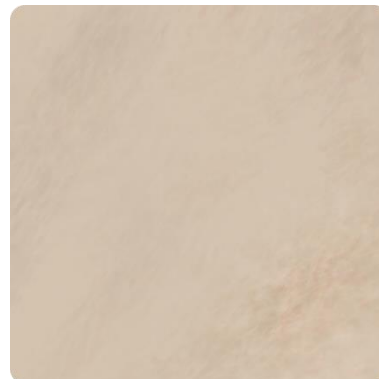
## MICROSTONE® N & NW WITH PIGMENTS



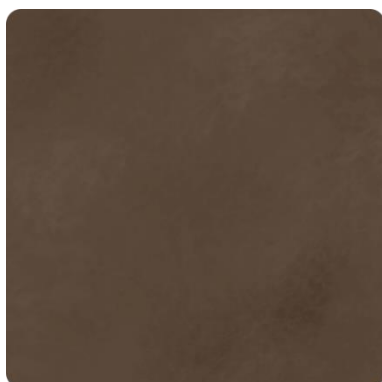
**MS 109**  
(3% MS BASE 21 / 7% MS BASE 31)



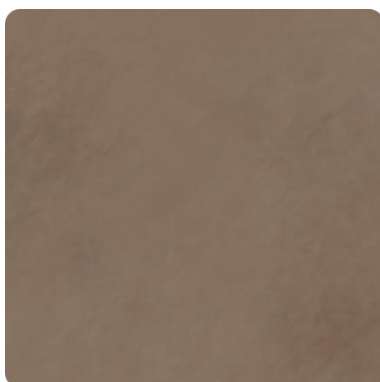
**MS 110**  
(1.5% MS BASE 21 / 4% MS BASE 31)



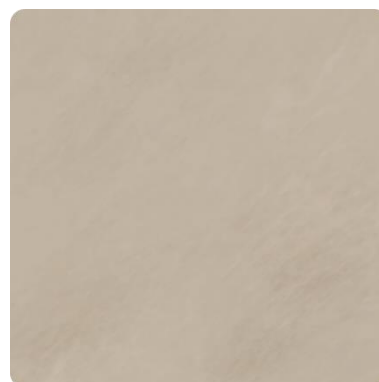
**MS 111**  
(0.5% MS BASE 21 / 2% MS BASE 31)



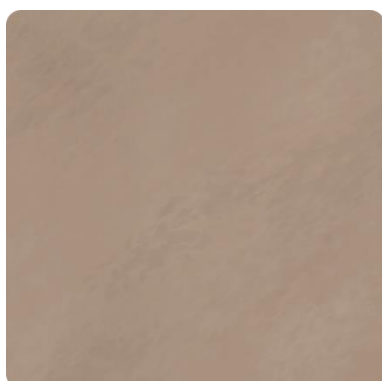
**MS 112**  
(7.5% MS BASE 22)



**MS 113**  
(5% MS BASE 22)



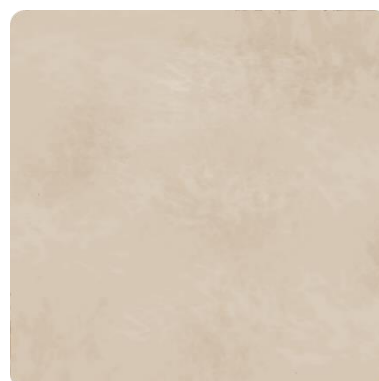
**MS 114**  
(2% MS BASE 22)



**MS 115**  
(7% MS BASE 23)



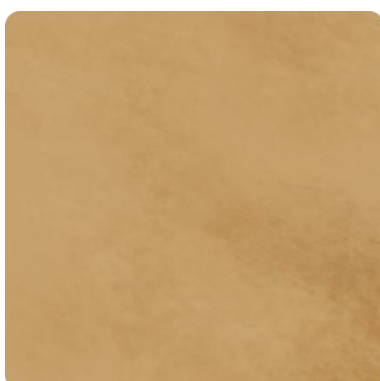
**MS 116**  
(4.5% MS BASE 23)



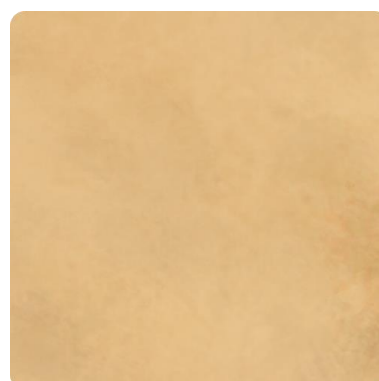
**MS 117**  
(3% MS BASE 23)



**MS 118**  
(7.5% MS BASE 24 / 2% MS BASE 31)



**MS 119**  
(4% MS BASE 24 / 1% MS BASE 31)



**MS 120**  
(0.5% MS BASE 31)

# microstone

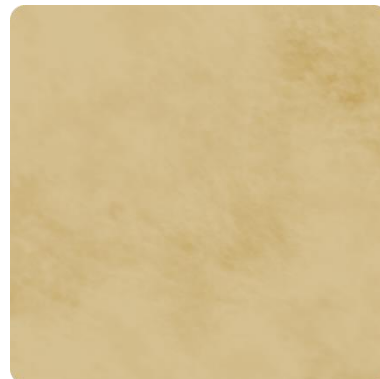
## MICROSTONE® N & NW WITH PIGMENTS



**MS 132**  
(7% MS BASE 30)



**MS 135**  
(5% MS BASE 34)



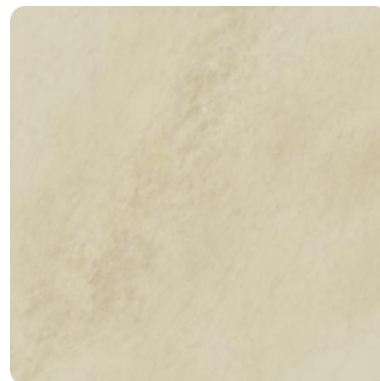
**MS 130**  
(5% MS BASE 28)



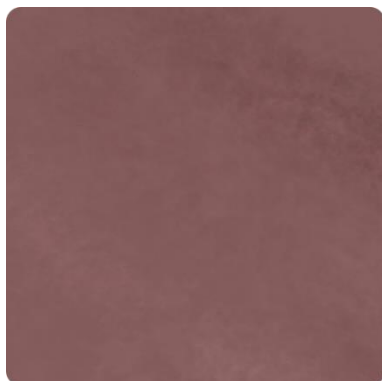
**MS 124**  
(7% MS BASE 26)



**MS 125**  
(4.5% MS BASE 26)



**MS 126**  
(2% MS BASE 26)



**MS 121**  
(7% MS BASE 25)



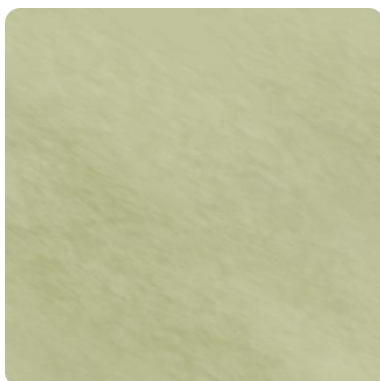
**MS 122**  
(3% MS BASE 25)



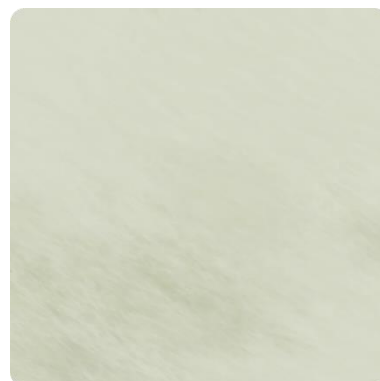
**MS 123**  
(1.5% MS BASE 25)



**MS 131**  
(6.5% MS BASE 29)



**MS 134**  
(3% MS BASE 33)



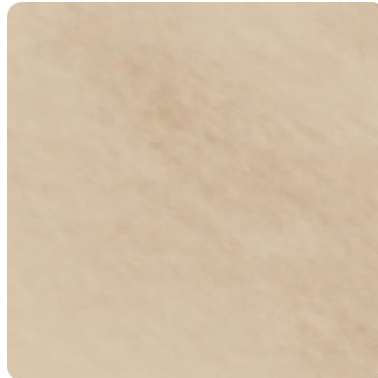
**MS 133**  
(3% MS BASE 32)

# microstone

## MICROSTONE® N & NW WITH PIGMENTS



**MS 127**  
(7% MS BASE 27)



**MS 128**  
(4.5% MS BASE 27)



**MS 129**  
(2% MS BASE 27)



**MS 136**  
(6% MS BASE 35)



**MS 052**  
(3% MS BASE 35)



**MS 053**  
(1% MS BASE 35)

*Colours may change depending on monitor and printer settings. They are presented as a reference only. For colour specifications it is strongly recommended that a physical sample is produced. MICROSTONE® pigments are made of natural minerals. Note that unavoidable slight differences and irregularities, typical of natural products, are to be expected.*



### United Kingdom

Supdeco Ltd  
166 South Block  
London - SE1 7GE  
+44 77 5686 3326

### Ireland

Supdeco IE Ltd  
SC Glasheen Road  
T12 RW 5C - Cork  
+353 76 680 1071

### Sweden

Supdeco AB  
Ramlösavägen 104A  
256 56 - Helsingborg  
+46 732 440 131

### Costa Rica

Supdeco SA  
200 sur Cristo Sabanilla  
Sabanilla - San Jose  
+506 8353 1443

[info@supdeco.co](mailto:info@supdeco.co) | [www.supdeco.co](http://www.supdeco.co)