

# microstone

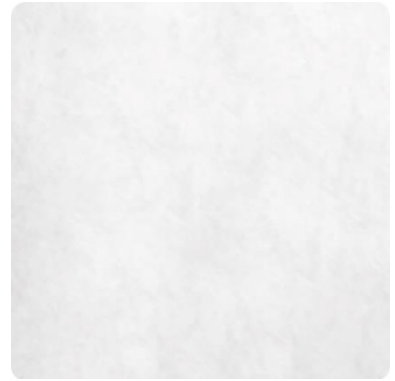
## MICROSTONE® N & NW WITH PIGMENTS



**MS 001**  
(7.5% MS BASE 01)



**MS 002**  
(0.5% MS BASE 01)



**MS 003**  
(2.5% MS BASE 01) / 1% MS BASE 04)



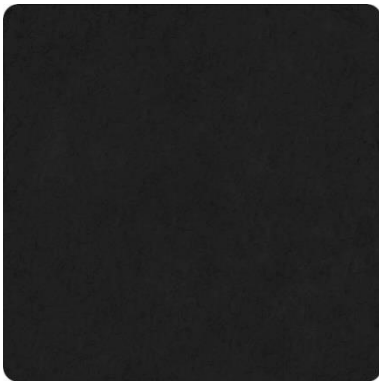
**MS 004**  
(3% MS BASE 04)



**MS 005**  
(7% MS BASE 04)



**MS 006**  
(2% MS BASE 03)



**MS 007**  
(7.5% MS BASE 03)



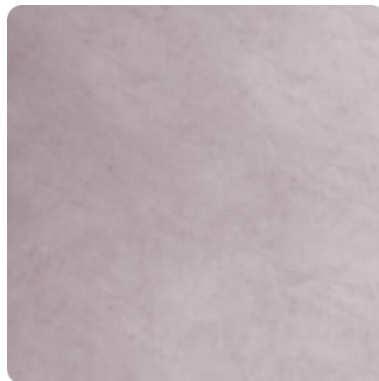
**MS 020**  
(7.5% MS BASE 04)



**MS 021**  
(2% MS BASE 05)



**MS 022**  
(5% MS BASE 05)



**MS 030**  
(3% MS BASE 04 / 1% MS BASE 06)



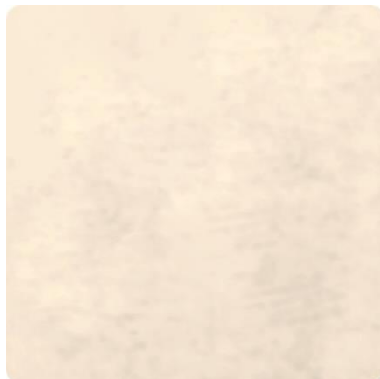
**MS 031**  
(3% MS BASE 04 / 1% MS BASE 18)

# microstone

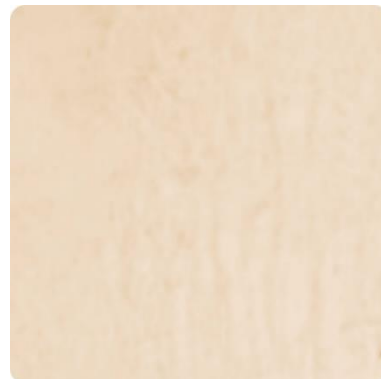
## MICROSTONE® N & NW WITH PIGMENTS



**MS 032**  
(3% MS BASE 04 / 1% MS BASE 16)



**MS 101**  
(1% MS BASE 07)



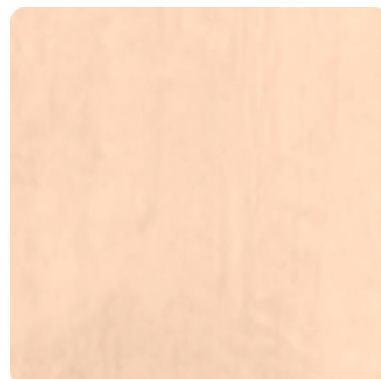
**MS 102**  
(5% MS BASE 07)



**MS 103**  
(3% MS BASE 08)



**MS 104**  
(5% MS BASE 08)



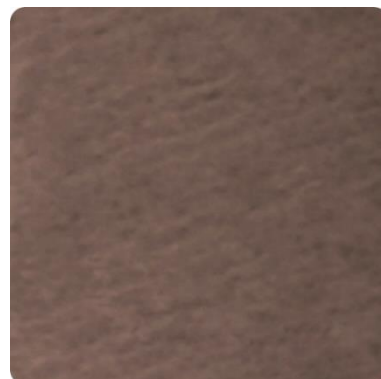
**MS 105**  
(3% MS BASE 09)



**MS 106**  
(5% MS BASE 09)



**MS 107**  
(2.5% MS BASE 01 / 1% MS BASE 10)



**MS 108**  
(5% MS BASE 10)



**MS 201**  
(3% MS BASE 15)



**MS 202**  
(5% MS BASE 15)



**MS 203**  
(1% MS BASE 13)

# microstone

## MICROSTONE® N & NW WITH PIGMENTS



**MS 204**  
(5% MS BASE 13)



**MS 301**  
(1% MS BASE 06)



**MS 302**  
(5% MS BASE 06)



**MS 303**  
(3% MS BASE 11)



**MS 304**  
(5% MS BASE 11)



**MS 305**  
(3% MS BASE 14)



**MS 306**  
(5% MS BASE 14)



**MS 307**  
(3% MS BASE 12)



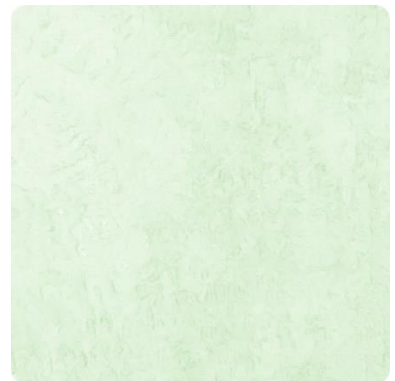
**MS 308**  
(5% MS BASE 12)



**MS 401**  
(1% MS BASE 17)



**MS 402**  
(5% MS BASE 17)



**MS 403**  
(1% MS BASE 16)

# microstone

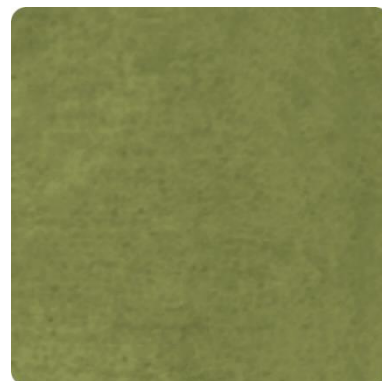
## MICROSTONE® N & NW WITH PIGMENTS



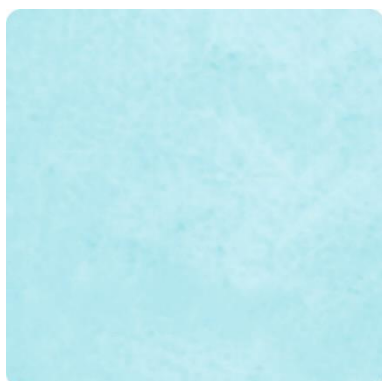
**MS 404**  
(5% MS BASE 16)



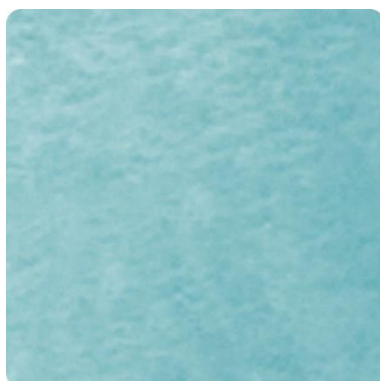
**MS 405**  
(7.5% MS BASE 13 / 5% MS BASE 18)



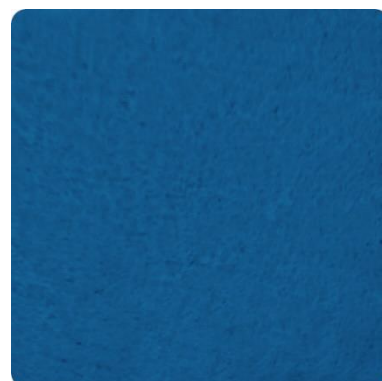
**MS 406**  
(5% MS BASE 13 / 7.5% MS BASE 18)



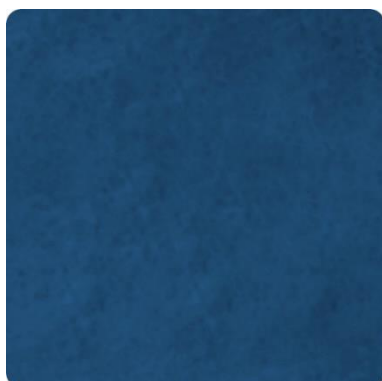
**MS 501**  
(1% MS BASE 18)



**MS 502**  
(5% MS BASE 19)



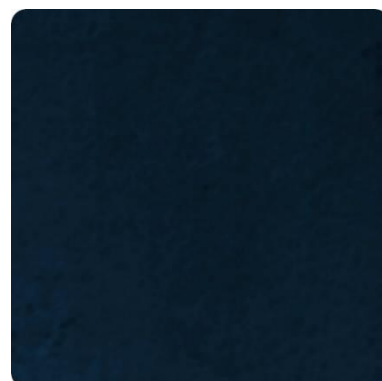
**MS 503**  
(7.5% MS BASE 20)



**MS 504**  
(7.5% MS BASE 20 / 1% MS BASE 03)



**MS 505**  
(7.5% MS BASE 20 / 2% MS BASE 03)



**MS 506**  
(7.5% MS BASE 20 / 3% MS BASE 03)

*Colours may change depending on monitor and printer settings. They are presented as a reference only. For colour specifications it is strongly recommended that a physical sample is produced. MICROSTONE® pigments are made of natural minerals. Note that unavoidable slight differences and irregularities, typical of natural products, are to be expected.*



### United Kingdom

Supdeco Ltd  
166 South Block  
London - SE1 7GE  
+44 77 5686 3326

### Ireland

Supdeco IE Ltd  
SC Glasheen Road  
T12 RW 5C - Cork  
+353 76 680 1071

### Sweden

Supdeco AB  
Ramlösavägen 104A  
256 56 - Helsingborg  
+46 732 440 131

### Costa Rica

Supdeco SA  
200 sur Cristo Sabanilla  
Sabanilla - San Jose  
+506 8353 1443

[info@supdeco.co](mailto:info@supdeco.co) | [www.supdeco.co](http://www.supdeco.co)